



Thank you for updating your Emission 5 Gas Analyzer!

If you have already installed the software for the Emission 5 Gas Analyzer and just want to do an update, follow these instructions. If you are installing the software for the first time follow the instructions that came with the Emission 5 Gas Analyzer.

Note: These instructions assume that you are using Microsoft Internet Explorer. If you are using Firefox or another browser there will be differences from the screens shown here.

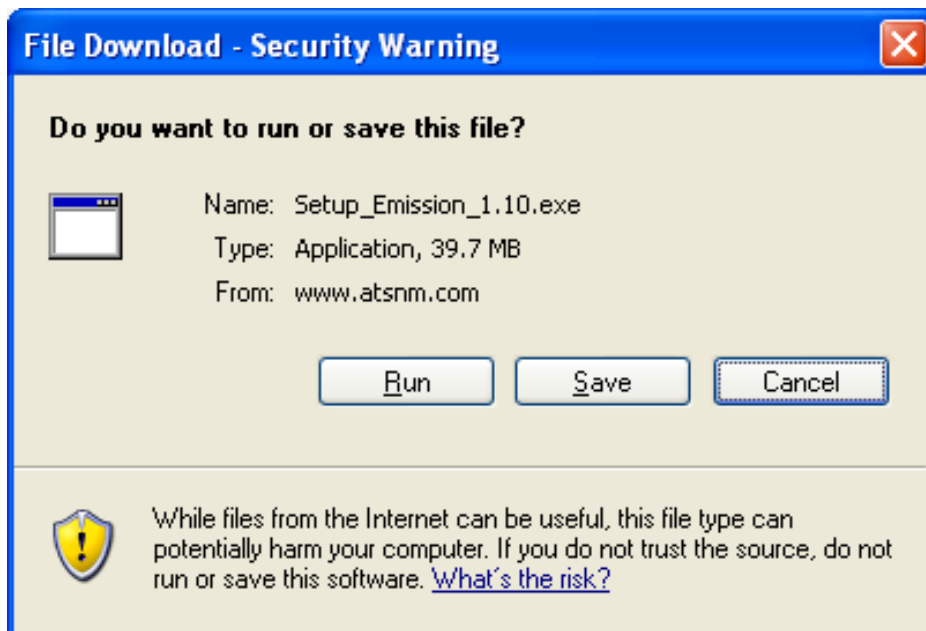
REGISTRATION:

In order to receive technical support you **MUST** register your products. Your information will be kept on file and referenced before any support is administered. You may register on-line by going to: <http://www.atsnm.com/registration.htm>. Your information is kept confidential and will not be shared.

SECTION 1

DOWNLOAD THE EMISSION SOFTWARE UPDATE:

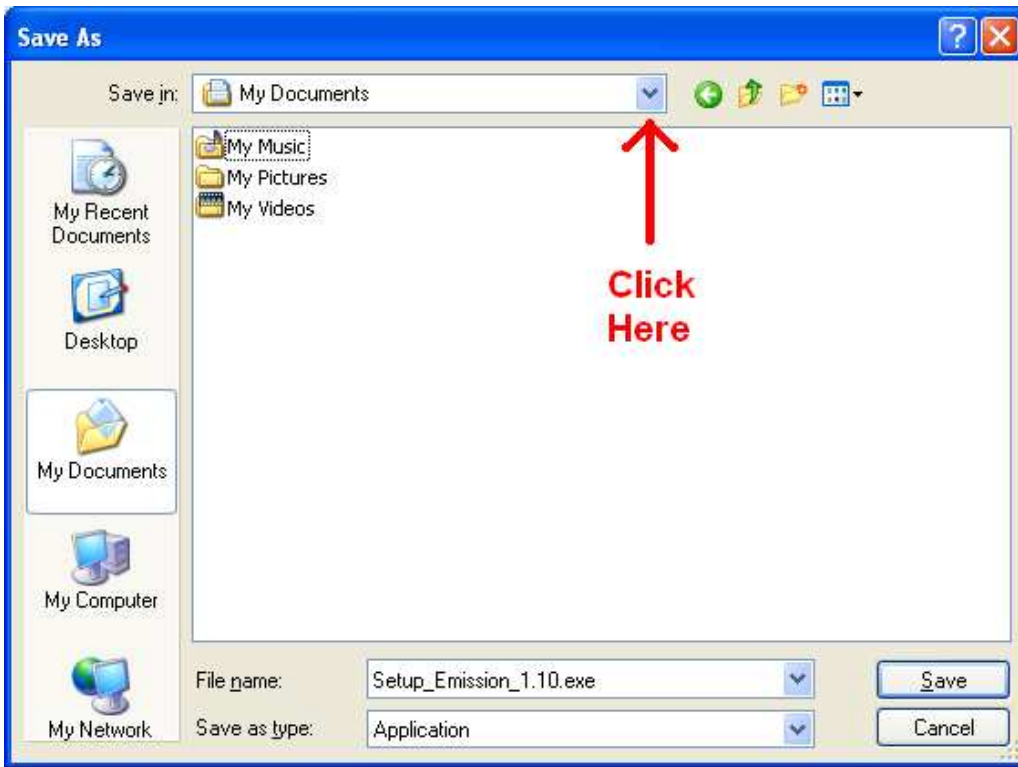
1. Click on the download link for the Emission software on the Automotive Test Solutions web site:
<http://www.atsnm.com/downloads.htm>
2. When the download starts, click on **Save**.



Note: Your screens may look slightly different from those shown here.

If using Windows XP:

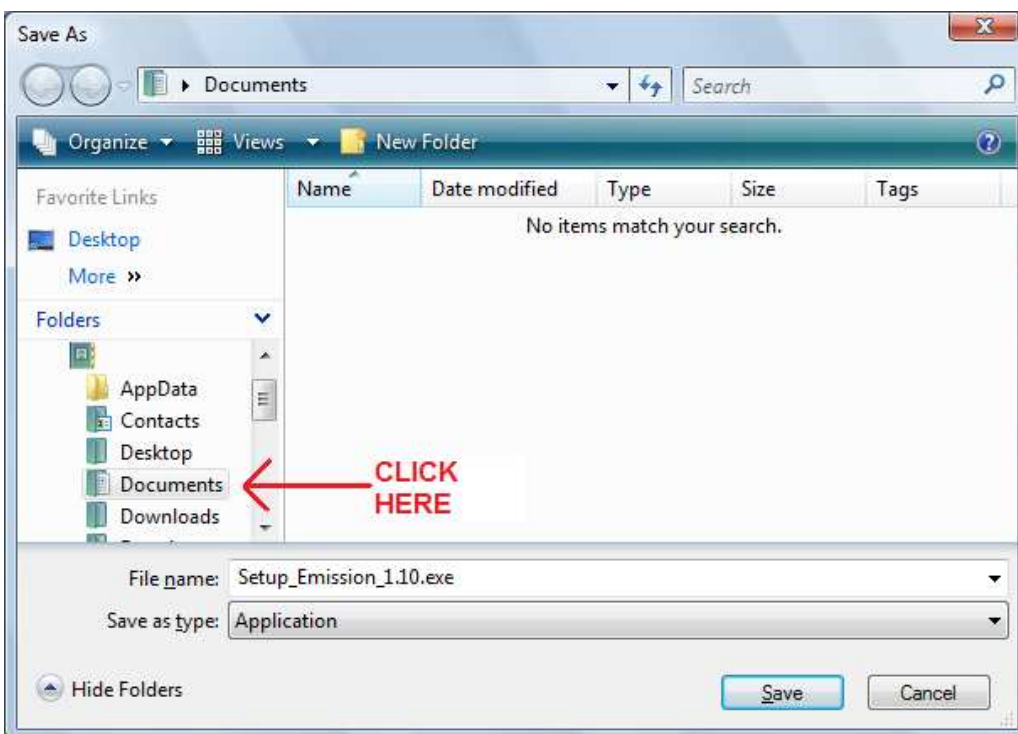
3. On the “Save As” window, click on the down arrow for “Save in” and navigate to “My Documents” as shown below.



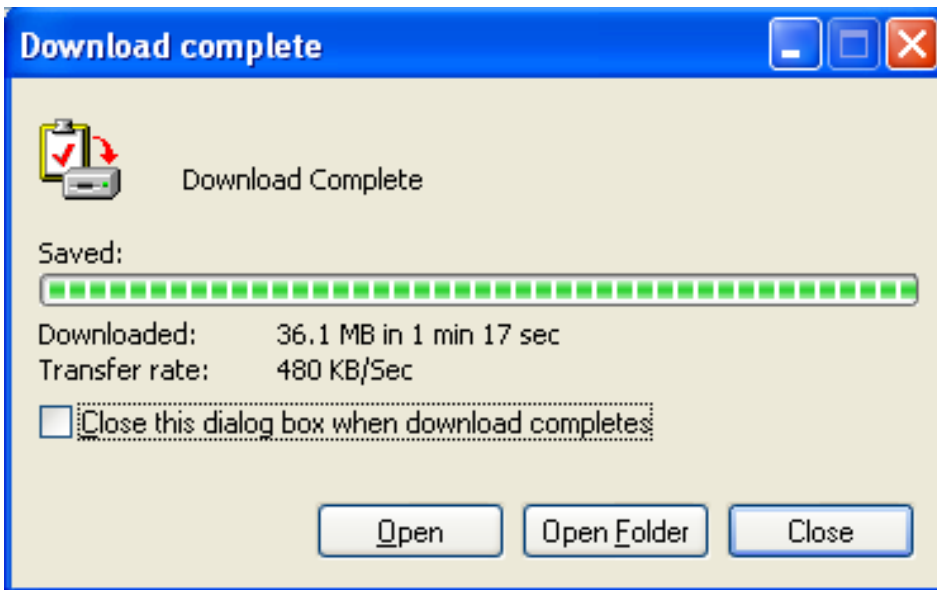
4. Once “My Documents” is displayed in “Save In:”, Click **Save**
5. Proceed to step 9.

If using Windows Vista or Windows 7:

6. On the “Save As” window, click on **Browse Folders** (if needed) to show the “Folders” display.
7. Click on **Documents** to select the Documents folder.
8. Once “Documents” is highlighted in “Folders”, Click **Save**.



9. At this point the download will start.

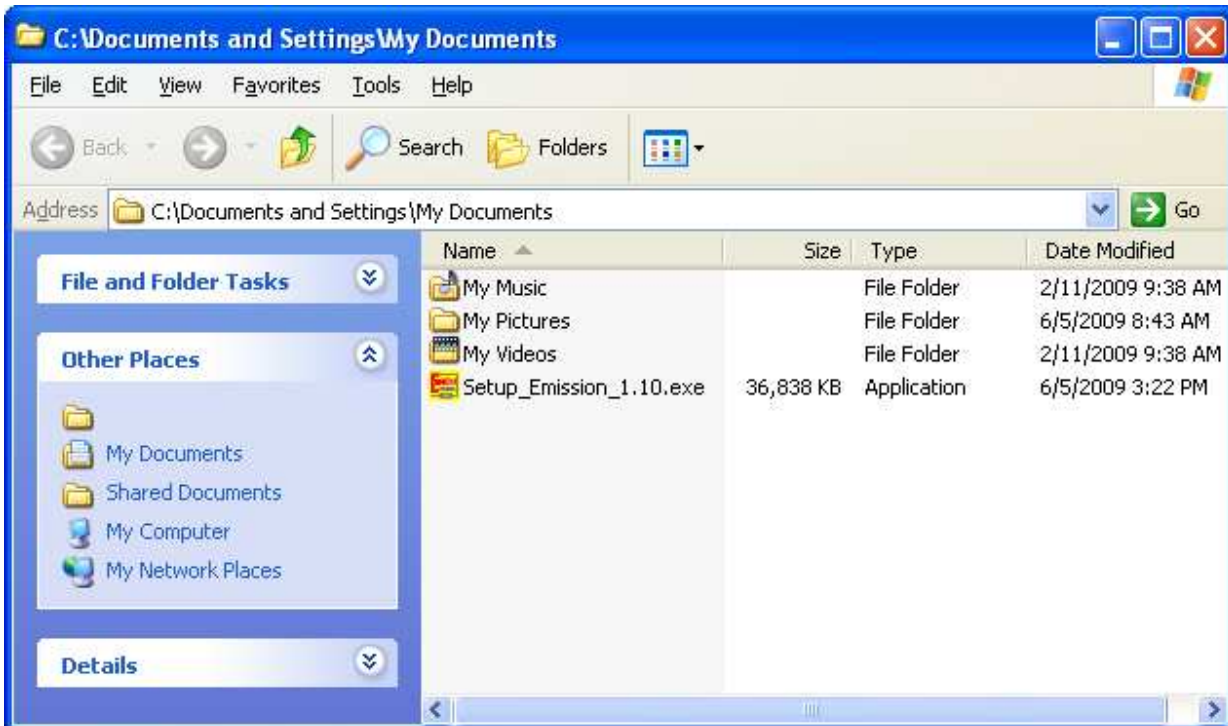


10. When the download is completed, click on **Open Folder**:

UNINSTALL THE SOFTWARE

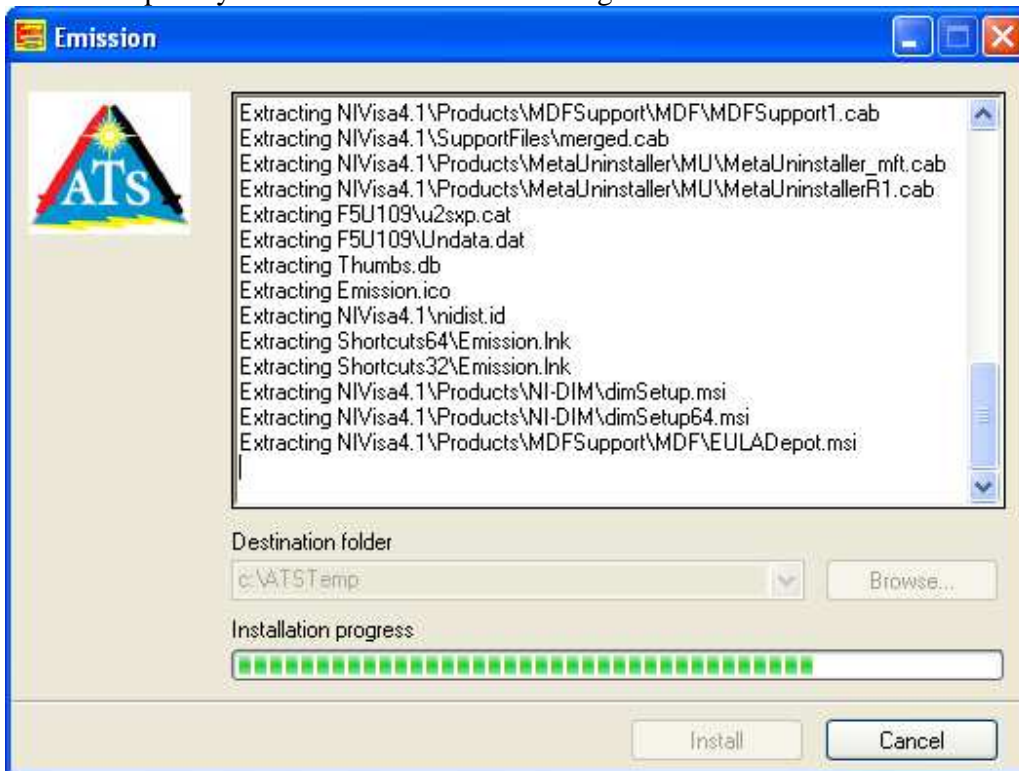
Note: If the software is already installed on you computer, the installer will need to be run twice; the first time to uninstall the software, the second time to install the new update.

11. Double click on the downloaded file (“Setup_Emission_1.10.exe” in this example. Your file may be different).



12. Click **Run** on the security window.

13. At this point you will see the “self-extracting” window:



14. *If using Windows Vista or Windows 7:*

If the UAC (User Account Control) should pop up, tell Windows to **Continue**.

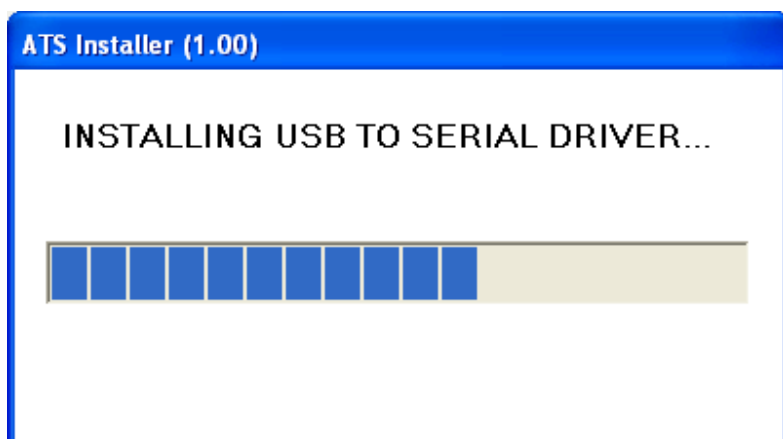


You may need to click on the “Microsoft (R) Windo...” in the task bar (as shown above) to bring up the UAC. Note: If the UAC is turned off on your computer, you will not see this warning.

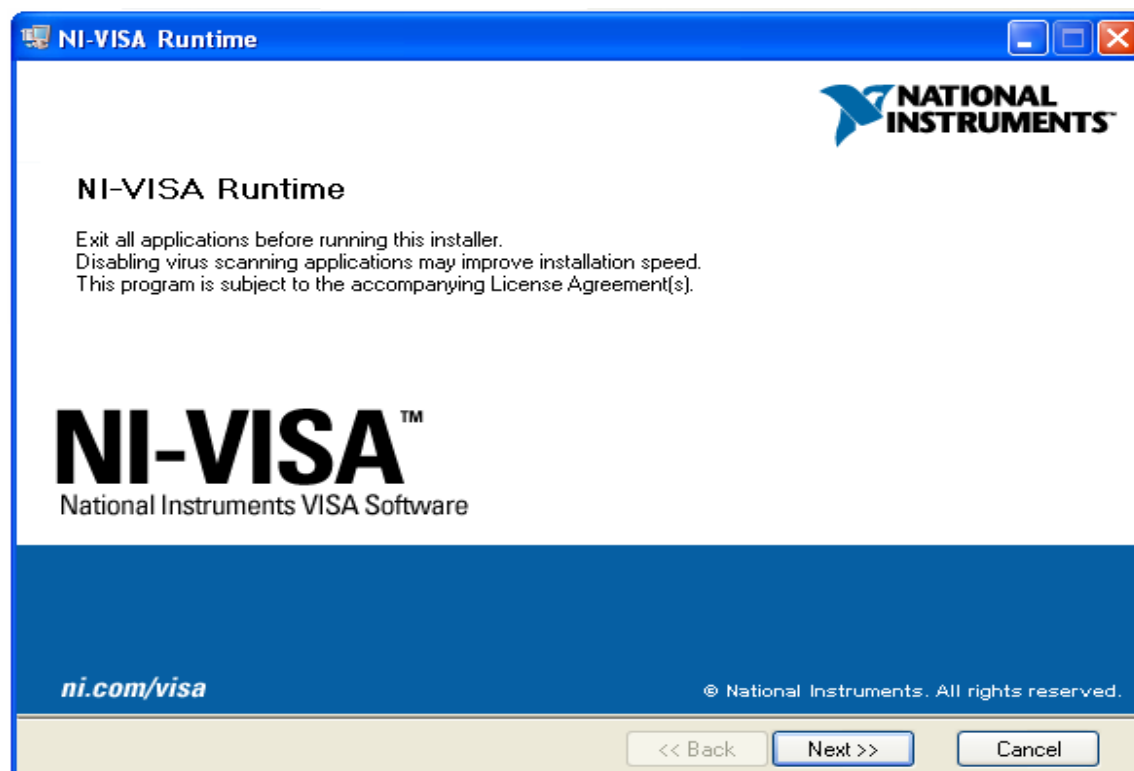
15. When the “self-extracting” window finishes, the Emission installation wizard starts; accept all defaults.



16. After the install for Emission completes, the driver install for the Blue USB to Serial Bridge will start. You will see the following (if not already installed):



17. The Blue USB to Serial Bridge driver install will run for several minutes and then will end automatically.
18. Following this the NI-VISA install will start (if NI-VISA is not already installed).



19. Accept all defaults for the NI-VISA install and restart your computer if asked.
20. A shortcut for the Emission software has been placed on your desktop. Click this shortcut to run the Emission software.

**SECTION 2
INSTALLING THE USB TO SERIAL BRIDGE:**

Note: If you were using the Emission 5 Gas Analyzer with a cable and not Bluetooth and the Emission 5 Gas Analyzer was working before installing the update, you do not need to reinstall the USB to Serial Bridge. If you will be using Bluetooth only and not a cable connection for your Emission 5 Gas Analyzer skip to SECTION 3: INSTALLING THE USB BLUETOOTH ADAPTER.

You will need to determine the type of USB to Serial Bridge you have. Look at the following pictures:



Blue USB to Serial Bridge



Belkin Adaptor



IO Gear Adaptor (With Orange Light)

If you have the Blue USB to Serial Bridge, proceed to **BLUE USB TO SERIAL BRIDGE INSTALL.**

If you have the Belkin Adaptor, proceed to **BELKIN ADAPTOR INSTALL.**

If you have the IO Gear adaptor, call ATS at 800-572-6112 for assistance.

If you have a different USB to Serial adaptor other than those shown here, the adaptor may not work with Emission 5 Gas Analyzer and may not be supported by ATS.

BLUE USB TO SERIAL BRIDGE INSTALL:

If you will be using Bluetooth only and *not* a cable connection for your Emission 5 Gas Analyzer skip to Section 3: **INSTALLING THE USB BLUETOOTH ADAPTER.**

If your computer does not have a serial port you will need a USB to Serial Bridge adapter. If your purchase included the Blue USB to Serial Bridge adapter, please follow the steps below to install your adapter.



Note: Connect the Blue USB to Serial Bridge adapter to the computer's USB port only *after* the driver software has been installed (See section 1).

1. Connect the Blue USB to Serial Bridge adapter to a USB port on your computer.
2. If this is the first time you have connected the Blue USB to Serial Bridge adapter, after a few moments you will see on your task bar:



Followed by:



If using Windows Vista or Windows 7:

Your "Found New Hardware" messages will look different.

Since you are using the cable connection and *not* Bluetooth, at this point you will connect the 9 pin cable from the Blue USB to Serial Bridge adapter to the 9 pin connector on the rear of the Emission 5 Gas Analyzer and skip to Section 5: **FIND YOUR COM PORT NUMBER.**

BELKIN ADAPTOR INSTALL:

If your computer does not have a serial port you will need a USB to serial port adapter. If your purchase included the Belkin F5U409 USB to serial port adapter, please follow the steps below to install your adapter:

If using a 64 Bit Version of Windows Vista or Windows 7:

NOTE: The Belkin adaptor will not work with the 64 Bit Version of Windows Vista or Windows 7 . If you are using a 64 bit version of Windows you will need a different USB to serial port adapter. Call ATS at 800-572-6112 for assistance.

If using Windows XP:

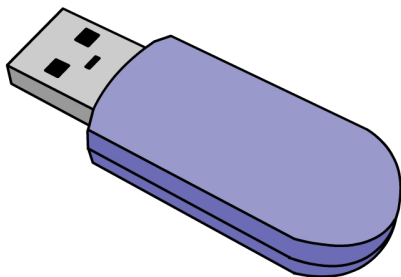
1. Connect the Belkin F5U409 USB to serial port adapter to a USB port on your computer.
2. At this point Windows will look for a driver. Click **Cancel** on the “Found New Hardware” Wizard.
3. Click on the Windows **Start** button and click **Control Panel**.
4. On the left side of **Control Panel** - Click on **Switch To Classic View** (if needed).
5. In control panel click on double click on **System**
6. On the System Properties window - Click on the **Hardware** tab.
7. Click on **Device Manager**.
8. Under **Other Devices**. You should see “Belkin Components” with a yellow exclamation mark by it.
9. Right click on the **Belkin Components** and choose “Update Driver”
10. On the Hardware Update Wizard, Choose “No, not this time” – Click **Next**.
11. Click “Install from a list or specific location (Advanced)” – Click **Next**
12. Confirm that there is a check mark by “Include this location in search”
13. Click **Browse** - Navigate to **My Computer** – **Local Disk C:** - then to **F5U109** - click **OK**
14. Click **Next**
15. Windows will search and load the driver.
16. When the diver has finished loading - Click **Finish**.
17. Look back to the **Device Manager** window. Under **Ports**, you should see “Belkin Serial On USB...” - note the number next to “COM”. You will need this number later on when you run Emission software. If you need to find the “Com port” number again, see the section FIND YOUR COM PORT NUMBER below
18. A shortcut for the Emission software has been placed on your desktop. Click this shortcut to run the Emission software.

If using Windows Vista or Windows 7 (32 bit Version):

1. Connect the Belkin F5U409 USB to serial port adapter to a USB port on your computer.
2. At this point Windows will look for a driver. Click **Cancel** on the “Found New Hardware” Wizard.
3. Click on the Windows **Start** button and click **Control Panel**.
4. On the left side of **Control Panel** - Click on **Classic View** (if needed).
5. In **Control Panel** click on double click on **System**
6. Click **Advanced system settings**
7. On the System Properties window - Click on the **Hardware** tab.
8. Click on **Device Manager**.
9. Under **Other Devices**. You should see “Unknown Device” with a yellow exclamation mark by it.
10. Right click on **Unknown Device** and choose “Update Driver”
11. Choose “Browse my computer for driver software”
12. Click **Browse** - Navigate to **Computer - C:** - then to **F5U109** - click **OK**
13. Click **Next**
14. Windows will search and load the driver.
15. When the driver has finished loading - Click **Finish**.
16. Look back to the **Device Manager** window. Under **Ports**, you should see “Belkin Serial On USB...” - note the number next to “COM”. You will need this number later on when you run Emission software. If you need to find the “Com port” number again, see the section FIND YOUR COM PORT NUMBER below

17. A shortcut for the Emission software has been placed on your desktop. Click this shortcut to run the Emission software.

SECTION 3 INSTALLING THE USB BLUETOOTH ADAPTER:



USB Bluetooth Adapter


Note: If you have Bluetooth built-in to your computer the distance you can operate the Emission 5 Gas Analyzer from the computer is limited to about 10 to 15 feet. If you use the USB Bluetooth Adapter, you can operate the Emission 5 Gas Analyzer to about 50 feet (line of sight) from the computer. ATS recommends using the USB Bluetooth Adapter instead of the Bluetooth built-in to your computer.

1. Plug in your USB Bluetooth Adapter to an available USB port on your computer.
2. You should see a “Found New Hardware” pop-up window and other auto-install pop-up windows should appear in the lower right part of your screen. After windows has completed installation of your USB Bluetooth Adapter you should see a “Your new hardware is installed and ready to use” pop-up window.



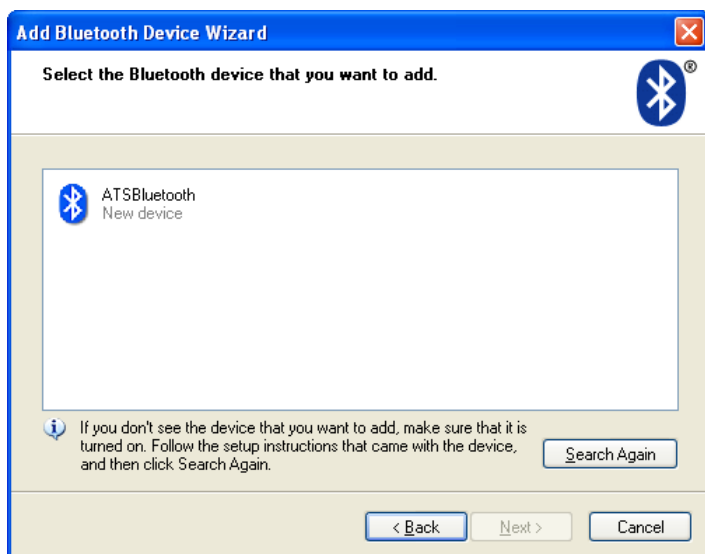
If using Windows Vista or Windows 7:

Your “Found New Hardware” messages will look different.

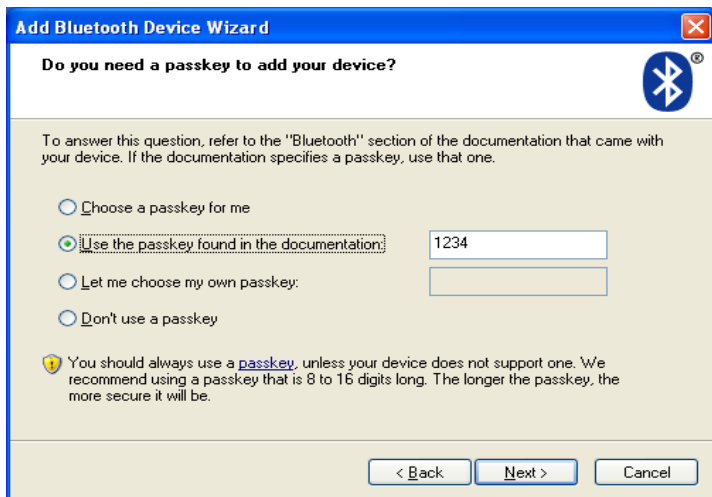
3. Right-Click on Bluetooth icon  in the lower right portion of your Windows tool bar and select “Add a Bluetooth Device”. On some computers this may be titled “Bluetooth Setup Wizard”. You should see the window below:



4. Confirm that “My device is set up and ready to be found” is check marked, then Click **Next**.
5. After a few seconds, you should see the window below:

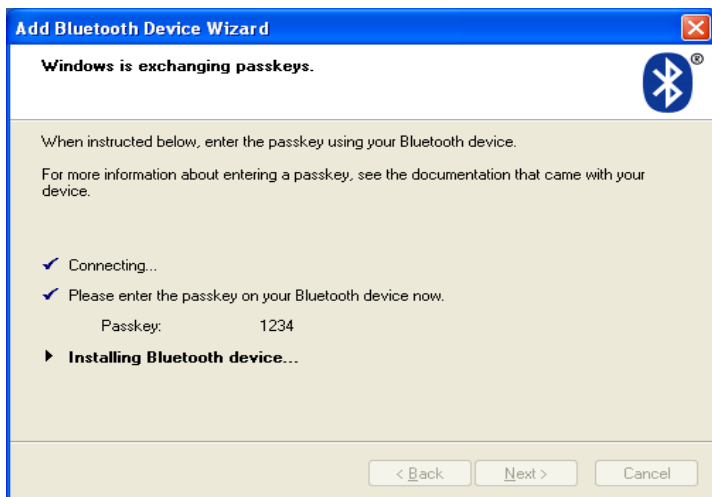


6. Click on “ATSBluetooth” and click **Next**. You should see the window below:



7. Select “Use the passkey found in the documentation”- enter **1234** for the passkey - and click **Next**.

8. You should briefly see a window that looks like this:

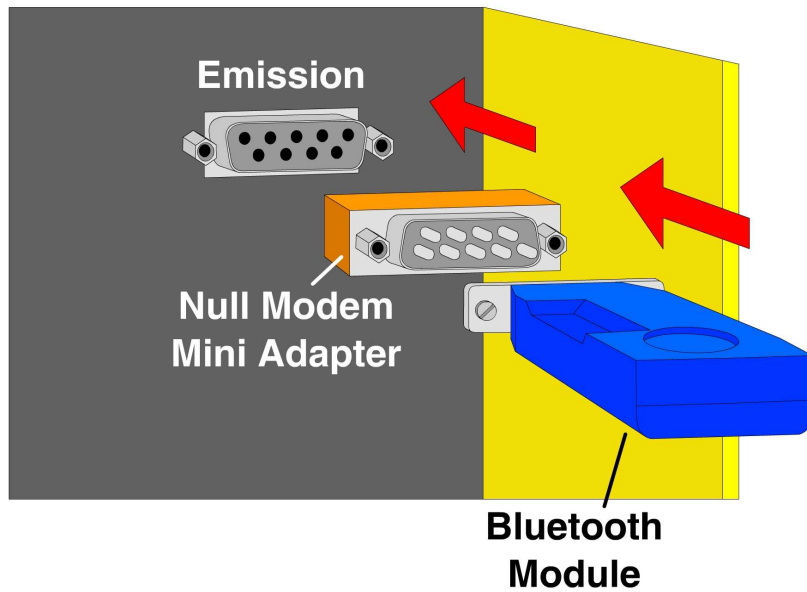


10. Next you should see the window below. Note the COM port number for the **Outgoing COM port** (3 in this example). This is the port number that will be used by the Emission software. Click **Finish**.



SECTION 4

INSTALLING THE BLUETOOTH MODULE ON THE EMISSION 5 GAS ANALYZER



1. Plug the Null Modem Adaptor into 9 pin connector on the rear of the Emission 5 Gas Analyzer.
2. Plug the 9 pin Bluetooth module into the Null Modem Adaptor.
3. Make sure your computer is powered up with the Bluetooth module enabled (see “INSTALLING THE USB BLUETOOTH ADAPTER” above).
4. Also make sure the Emission 5 Gas Analyzer is turned on.

SECTION 5

FIND YOUR COM PORT NUMBER:

If your Emission software pops up with the message “Cannot Communicate with Emission”; make sure the cable is connected between the PC and Emission, the Emission is plugged into the vehicle, the vehicle is running or the key is turned on and the power light on Emission is lit. If all this is in place and the Emission still cannot communicate, the Emission may be using the wrong com port number. To find the correct com port number do the following:

For Bluetooth Connection:

Right click on the **Bluetooth** icon  on the Windows task bar.

1. Choose **Show Bluetooth Devices**.
2. Click the **COM Ports** tab.
3. Use the “Outgoing” com port number.

For Cable Connection with the Belkin Adaptor:

1. Click on the Windows **Start** button and click **Control Panel**.
2. In **Control Panel** click on double click on **System**
3. *If using Windows Vista or Windows 7:* Click **Advanced system settings**
4. On the **System Properties** window - Click on the **Hardware** tab.
5. Click on **Device Manager**.
6. Click on **Ports(COM & LPT)**. This will show you the com port numbers that your device is using.

The following chart will be helpful:

DEVICE CONNECTION	COM PORT NUMBER
Direct Cable Connection	Usually port 1
Belkin Adapter	Number by “Belkin Serial On USB Port”
Blue USB to Serial Bridge	Number by "Prolific USB to Serial Comm Port"
Bluetooth	“Outgoing” Port Number in “Bluetooth Devices”

On the Emission Software Screen:

7. Enter the COM Port number in the Emission pop up window and click **Retry with above COM port**. You can also auto-search for the COM Port but this can take a while and only searches through COM1-20 for possible ports.



If you have an internet security program like “Norton Internet Security” it may warn you that the Emission program is trying to access the internet the first time you run it. If this happens tell the security program to **unblock** the Emission program. The Emission program needs to be unblocked so it can communicate with other ATS products for the MultiTool function.

PLEASE NOTE: If the Emission 5 Gas Analyzer loses power or is disconnected, you need to allow 15 seconds for the Emission 5 Gas Analyzer to power up and re-pair itself to the computer. If you are already running ATS software and get the message “Can’t Communicate”; shut down the software, wait 15 seconds and try again.

FLASH VIDEOS:

If you have problems running the Flash videos within the Emission program you may need to download the latest version of the Adobe Flash Player. You can get this by going to <http://get.adobe.com/flashplayer> and clicking the “Agree and Install Now” link.

SOFTWARE UPDATES:

Keep your Emission up to date!
Go to <http://www.atsnm.com/downloads.htm> for the latest updates.

AUTHORIZATION CODE:

The Emission program will require an authorization code in order to activate it.

When you open the Emission program it will display **Your Computer ID:**

Once you have this number; call 800-572-6112 or email the above information to us at support@atsnm.com.

You will be given an activation code:

Enter the activation code and press enter.

You are now ready to run the Emission Program.

I would like to personally thank you for choosing ATS. At ATS we stand behind our products and we are proud of the service we give to our customers. If you have any questions concerning the use of your Emission 5 Gas Analyzer, please call us at 800-572-6112.

Sincerely,



Bernie Thompson
President
Automotive Test Solutions, Inc.