



Thank you for updating your EScan Pro!

If you have already installed the software for the EScan Pro and just want to do an update, follow these instructions. If you are installing the software for the first time follow the instructions that came with the EScan Pro.

Note: These instructions assume that you are using Microsoft Internet Explorer. If you are using Firefox or another browser there will be differences from the screens shown here.

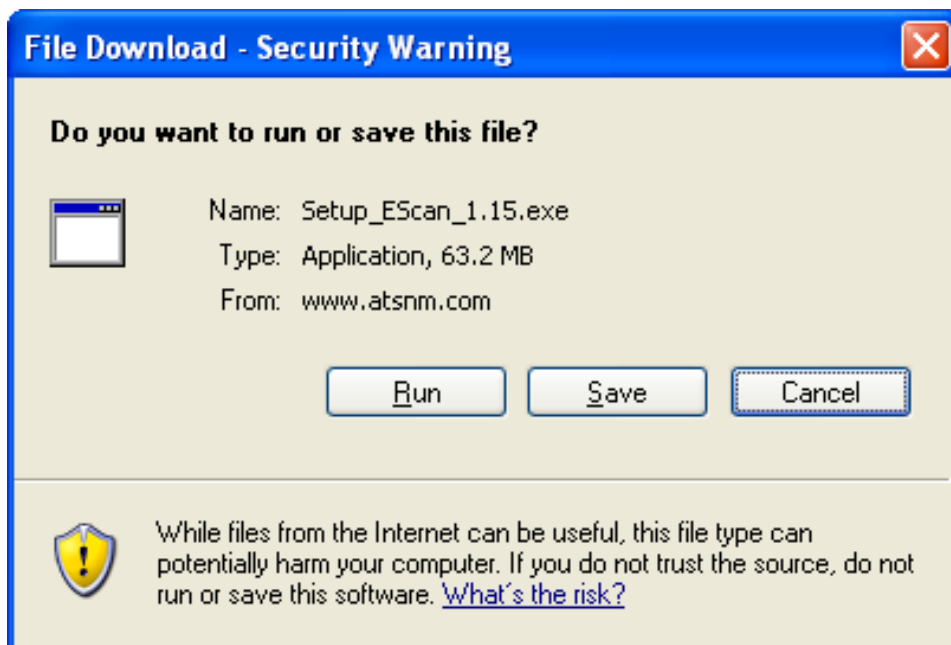
### REGISTRATION:

In order to receive technical support you **MUST** register your products. Your information will be kept on file and referenced before any support is administered. You may register on-line by going to: <http://www.atsnm.com/registration.htm>. Your information is kept confidential and will not be shared.

### SECTION 1

#### DOWNLOAD THE ESCAN PRO UPDATE:

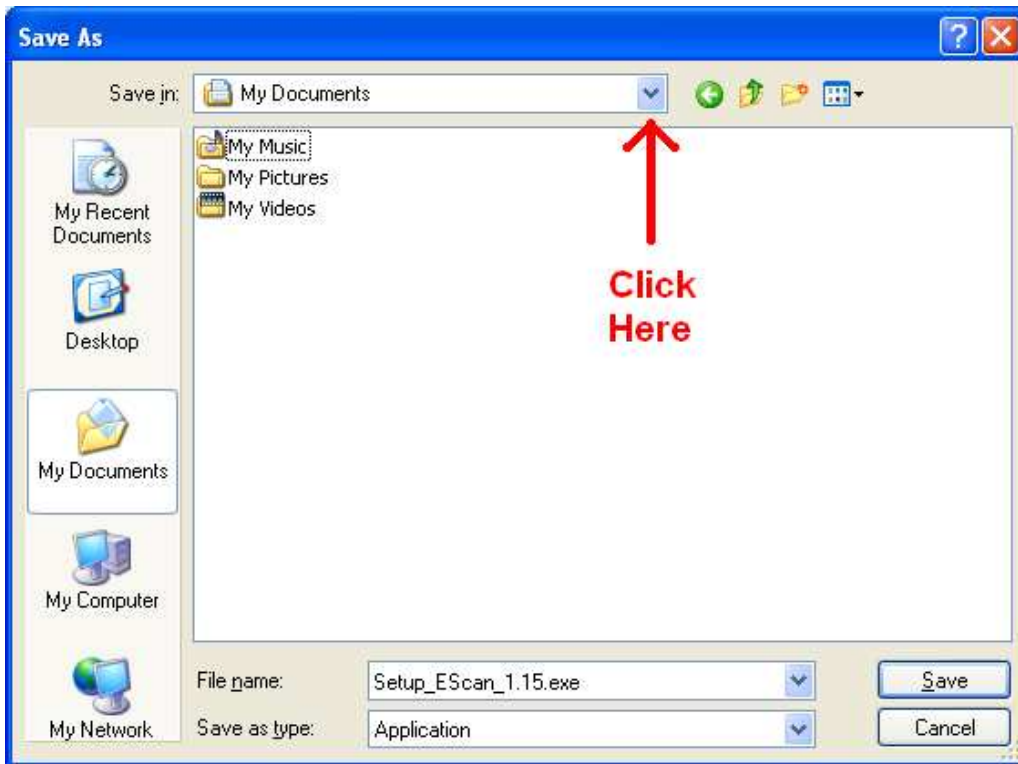
1. Click on the download link for the EScan Pro software on the Automotive Test Solutions web site: <http://www.atsnm.com/downloads.htm>
2. When the download starts, click on **Save**.



**Note: Your screens may look slightly different from those shown here.**

***If using Windows XP:***

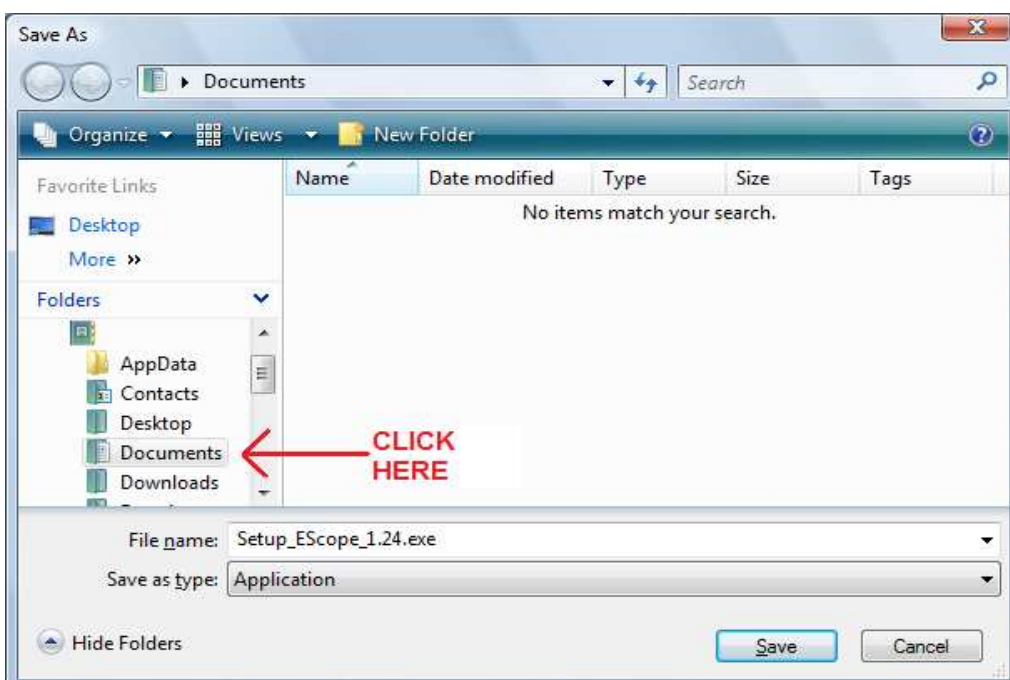
3. On the “Save As” window, click on the down arrow for “Save in” and navigate to “My Documents” as shown below.



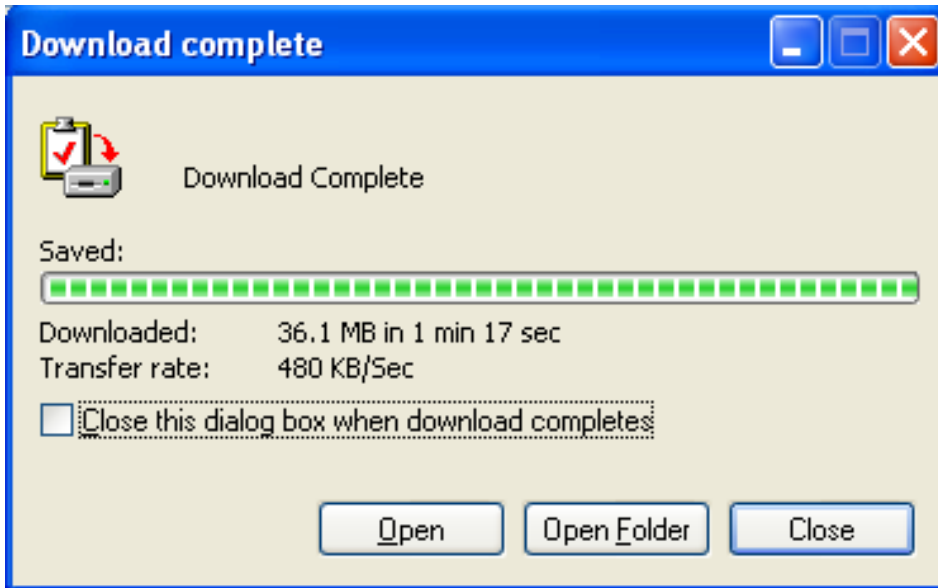
4. Once “My Documents” is displayed in “Save In:”, Click **Save**
5. Proceed to step 9.

***If using Windows Vista or Windows 7:***

6. On the “Save As” window, click on **Browse Folders** (if needed) to show the “Folders” display.
7. Click on **Documents** to select the Documents folder.
8. Once “Documents” is highlighted in “Folders”, Click **Save**.



9. At this point the download will start.

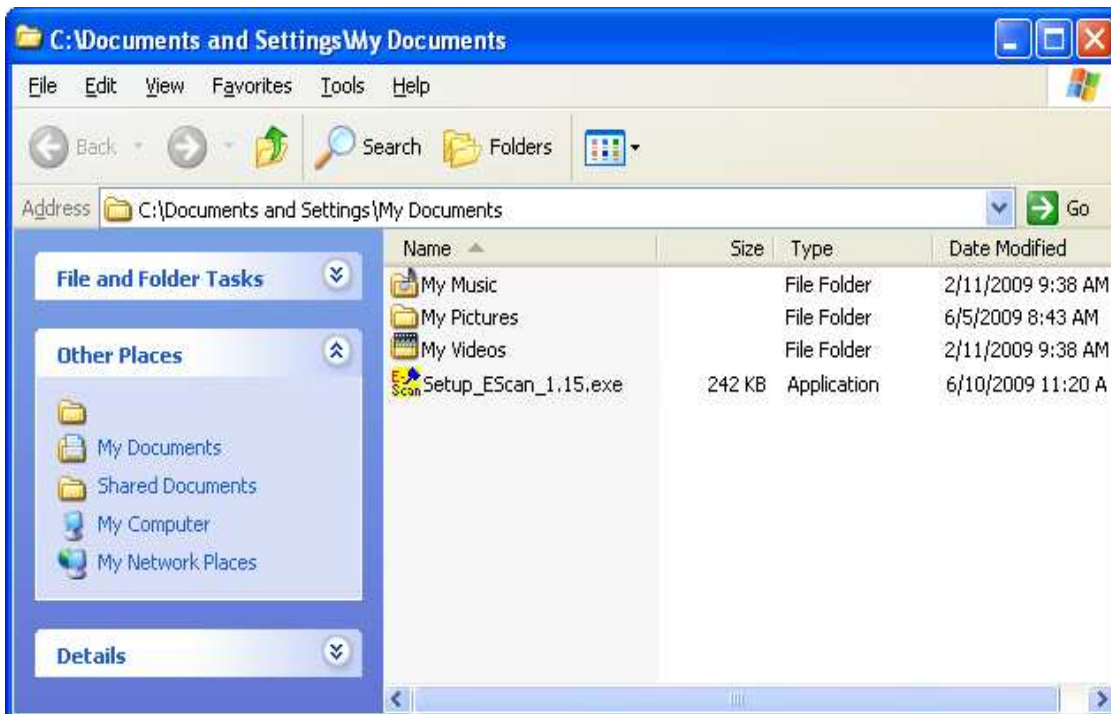


10. When the download is completed, click on **Open Folder**:

**Note: If the software is already installed on you computer, the installer will need to be run twice; the first time to uninstall the software, the second time to install the new update.**

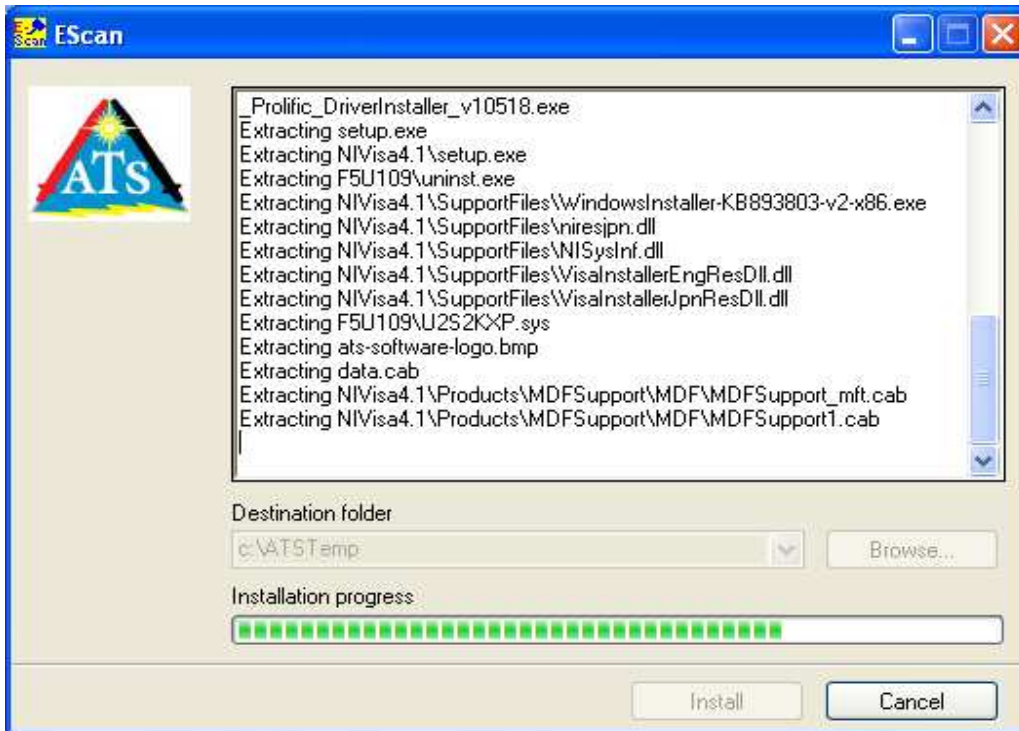
### UNINSTALL THE SOFTWARE

11. Double click on the downloaded file (“Setup\_EScan\_1.15.exe” in this example. Your file may be different).



12. Click **Run** on the security window.

13. At this point you will see the “self-extracting” window:



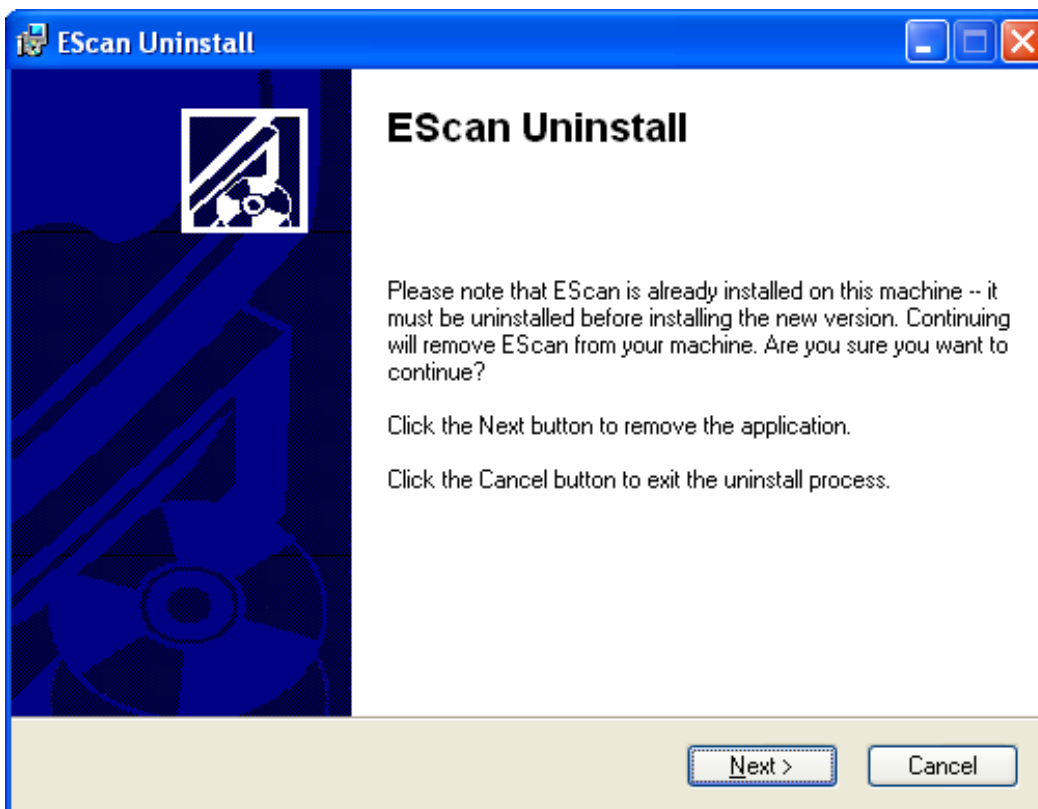
14. *If using Windows Vista or Windows 7:*

If the UAC (User Account Control) should pop up, tell Windows to **Continue**.



You may need to click on the “Microsoft (R) Windo...” in the task bar (as shown above) to bring up the UAC. Note: If the UAC is turned off on your computer, you will not see this warning.

15. When the “self-extracting” window finishes, the uninstall for the product starts; Click **NEXT** and then **FINISH**.

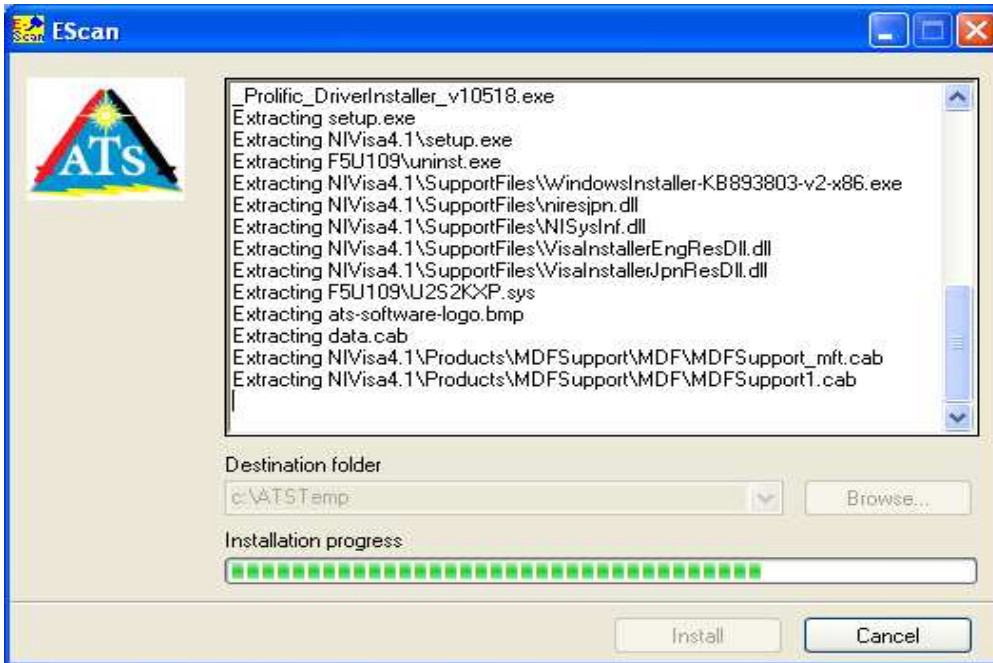


16. At this point the EScan Pro software is uninstalled. Next you will need to run the installer again to install the update.

### INSTALL THE UPDATE

17. As above in step 11, double click on the downloaded file, click on **Run** on the security screen.

18. Again, you will see the “self-extracting” window:



19. *If using Windows Vista or Windows 7:*

If the UAC (User Account Control) should pop up, tell Windows to **Continue**.



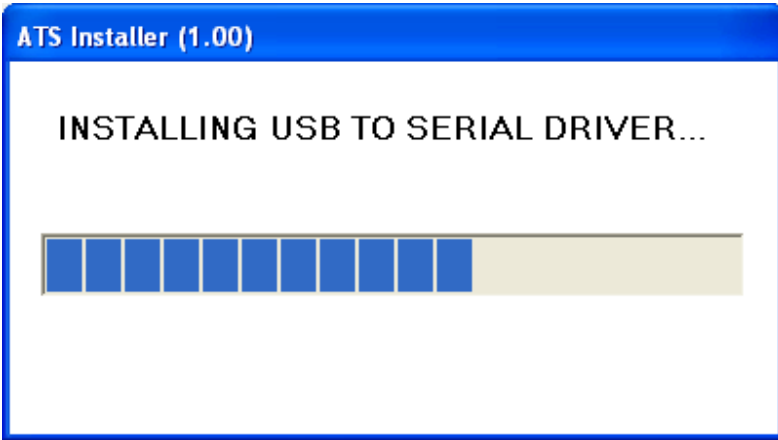
You may need to click on the “Microsoft (R) Windo...” in the task bar (as shown above) to bring up the UAC. Note: If the UAC is turned off on your computer, you will not see this warning.

20. When the “self-extracting” window finishes, the install for EScan Pro starts; accept all defaults



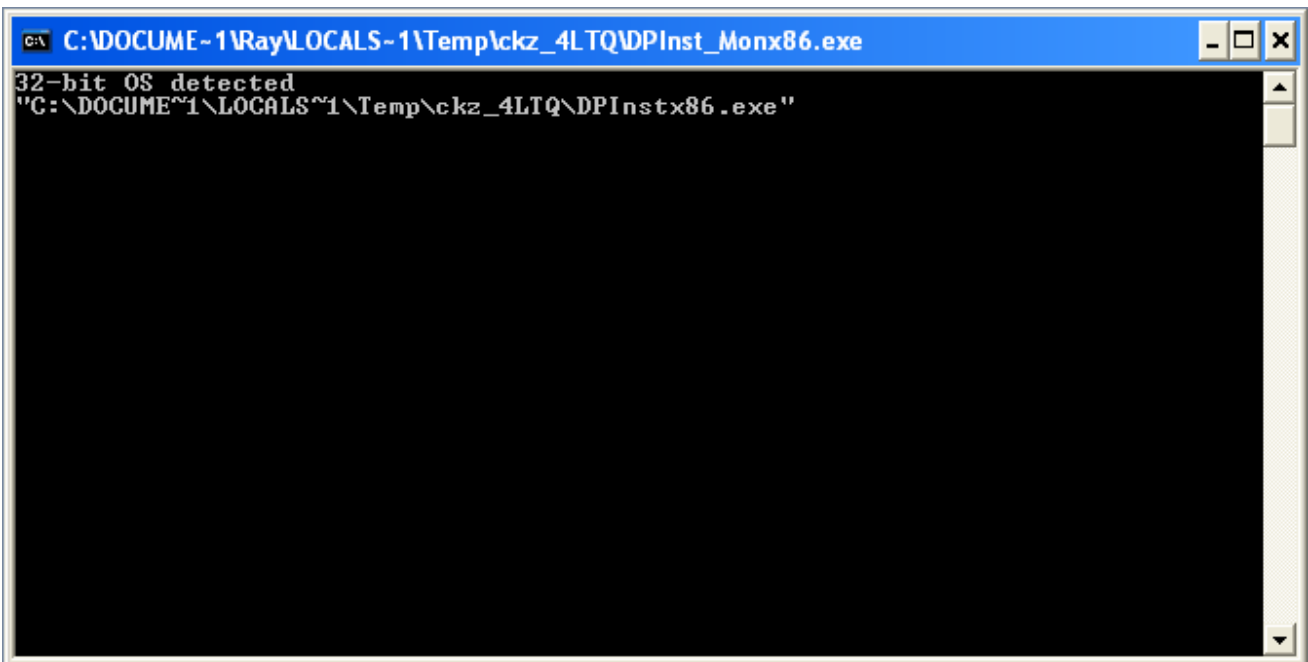
**Note: If the following drivers are already installed in your computer, you may not see some of the following items.**

21. After the install for EScan Pro completes, the driver install for the Blue USB to Serial Bridge will start. You will see the following (if not already installed):



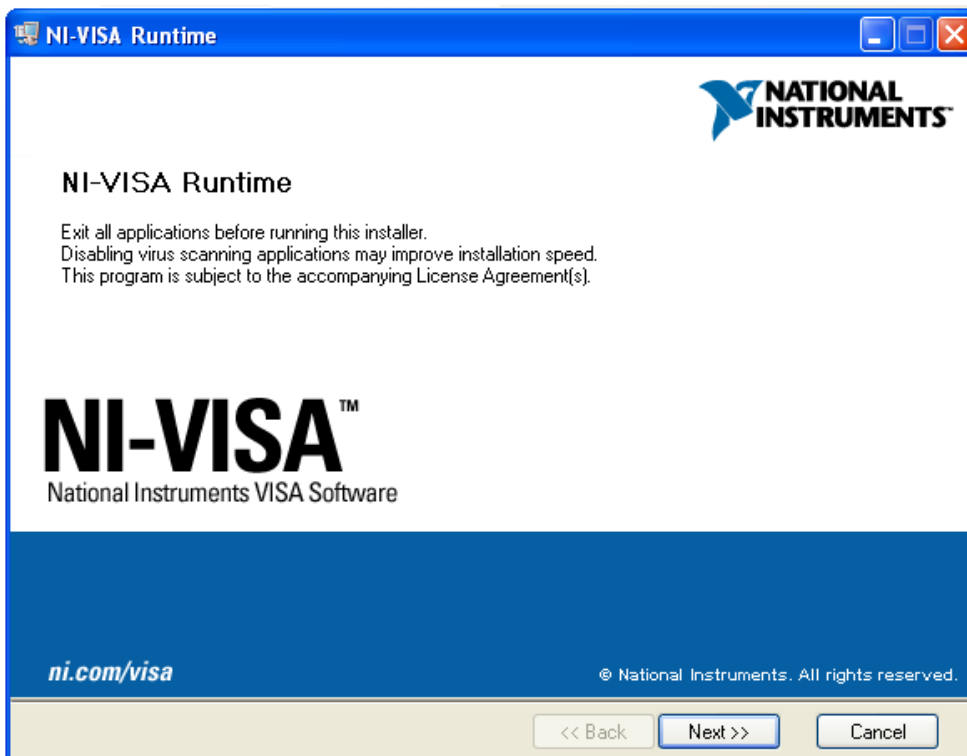
22. The Blue USB to Serial Bridge driver install will run for several minutes and then will end automatically.

23. Next you will see the following:



24. This will install the driver for the USB version of the EScan (if you don't have the USB version, the Blue USB to Serial Bridge driver above will work for the serial EScan.)

25. Following this the NI-VISA install will start (if NI-VISA is not already installed).



26. Accept all defaults for the NI-VISA install and restart your computer if asked.

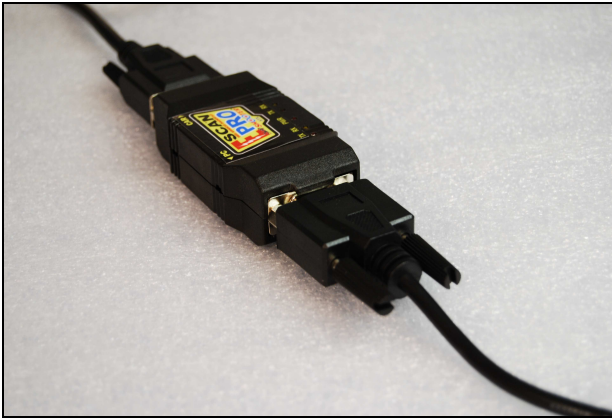
27. When the script completes you will see:



Note: If you restarted the computer after the NI-VISA install you won't see the "ATS Installer Finished" dialog.

## INSTALLING THE ESCAN HARDWARE:

The EScan Pro comes in two versions: The EScan Pro with Serial connection and the EScan Pro with USB connection.



EScan Serial Version



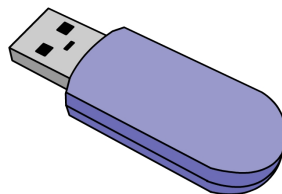
EScan USB Version

The main difference between the two versions is that the USB version does *not* use the Blue USB to Serial adaptor.



Blue USB to Serial adaptor

Either version can be purchased with the option of operating wirelessly with Bluetooth. If you have the Bluetooth option, your purchase will also include the USB to Bluetooth Adaptor.

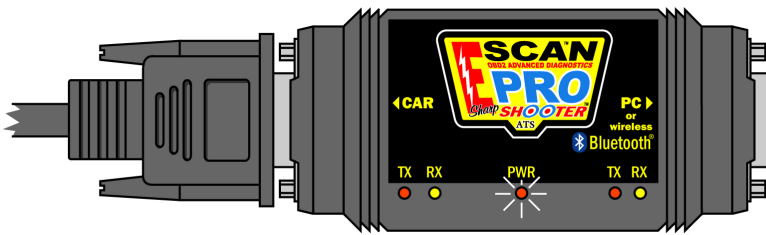


USB to Bluetooth Adaptor

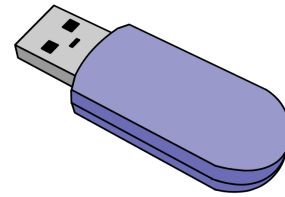
To operate the EScan with a cabled connection (Serial or USB), proceed to the Section 3.

To operate the EScan wirelessly proceed to Section 2 below.

## SECTION 2 SETTING UP ESCAN PRO WITH BLUETOOTH:



EScan Pro with Bluetooth



USB Bluetooth Adapter


### INSTALL USB BLUETOOTH ADAPTER:

Note: If you have Bluetooth built-in to your computer the distance you can operate the EScan Pro from the computer is limited to about 10 to 15 feet. If you use the USB Bluetooth Adapter, you can operate the EScan Pro to about 50 feet (line of sight) from the computer. ATS recommends using the USB Bluetooth Adapter instead of the Bluetooth built-in to your computer.

1. Plug in your USB Bluetooth Adapter to an available USB port on your computer.
2. You should see a “Found New Hardware” pop-up window and other auto-install pop-up windows should appear in the lower right part of your screen. After windows has completed installation of your USB Bluetooth Adapter you should see a “Your new hardware is installed and ready to use” pop-up window.



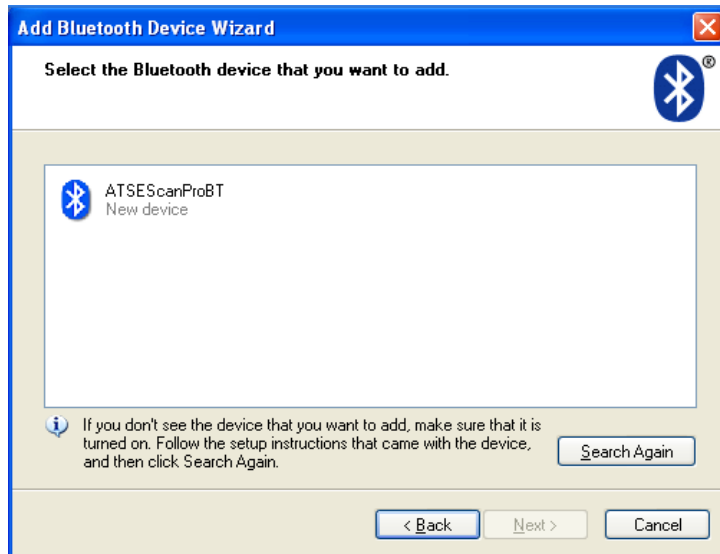
### INSTALL ESCAN PRO WITH BLUETOOTH:

1. Plug the EScan Pro into an automobile’s DLC connector (key must be on to provide power).
2. Confirm that the red power light on the EScan Pro is lit.
3. Make sure your computer is powered up with the Bluetooth module enabled (see “INSTALL USB BLUETOOTH ADAPTER” above).
4. Right-Click on Bluetooth icon  in the lower right portion of your Windows tool bar and select “Add a Bluetooth Device”. On some computers this may be titled “Bluetooth Setup Wizard”. You should see the window below:

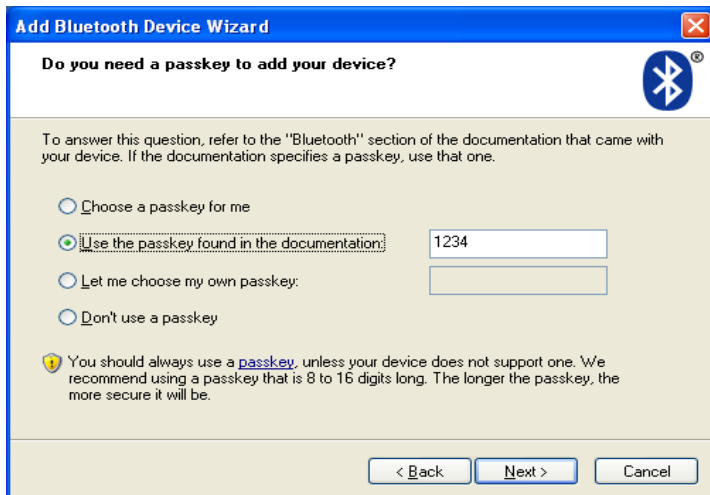


5. Confirm that “My device is set up and ready to be found” is check marked, then Click **Next**.

6. After a few seconds, you should see the window below:

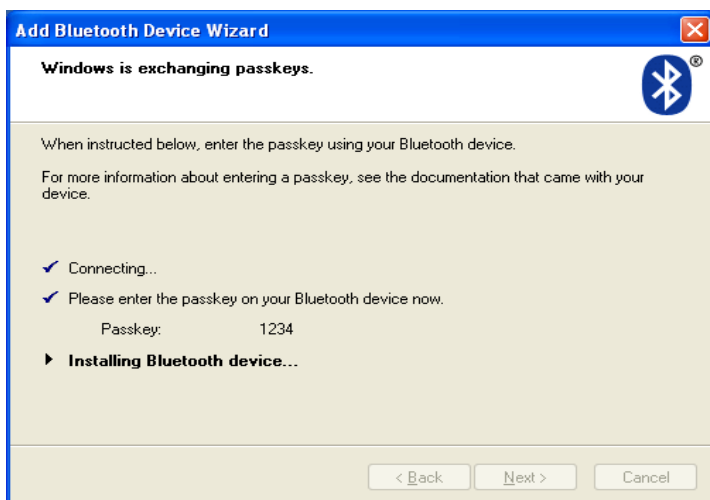


7. Click on “ATSEScanProBT” and click **Next**. You should see the window below:



8. Select “Use the passkey found in the documentation”- enter **1234** for the passkey - and click **Next**.

9. You should briefly see a window that looks like this:



10. Next you should see the window below. Click **Finish**.



11. A shortcut for the EScan software and the EScan manual have been placed on your desktop. Click these shortcuts to run the EScan software or to look at the EScan manual.



### SECTION 3 SETTING UP ESCAN PRO WITH A CABLED CONNECTION

**Note: The EScan software MUST be updated before connecting the EScan to the computer.**

1. Connect the USB cable of the EScan (or the Blue USB to Serial Bridge for the serial version) to a USB port on your computer.

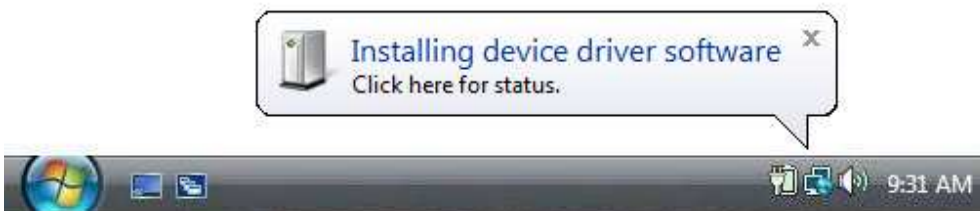


Connecting the EScan USB Version



Connecting the EScan Serial Version (Using the Blue USB to Serial Bridge)

2. If this is the first time you have connected EScan Pro, after a few moments you should see the “Installing Hardware” pop-up windows appear in the lower right part of your screen. These will look similar to below:



Followed by:



3. A shortcut for the EScan software and the EScan manual have been placed on your desktop. Click these shortcuts to run the EScan software or to look at the EScan manual.



## **SECTION 4 ADDITIONAL INFORMATION**

If you have an internet security program like “Norton Internet Security” it may warn you that the EScan Pro program is trying to access the internet the first time you run it. If this happens tell the security program to **unblock** the EScan Pro program. The EScan Pro program needs to be unblocked so it can communicate with other ATS products for the MultiTool function.

### **PLEASE NOTE:**

**If the EScan Pro with Bluetooth loses power or is disconnected, you need to allow 15 seconds for the EScan Pro with Bluetooth to power up and re-pair itself to the computer. If you are already running ATS software and get the message “Can’t Communicate”; you must then shut down the software, wait 15 seconds and try again.**

**For best results, always connect the EScan to the same USB port.**

### **FLASH VIDEOS:**

If you have problems running the Flash videos within the EScan program you may need to download the latest version of the Adobe Flash Player. You can get this by going to **<http://get.adobe.com/flashplayer>** and clicking the “**Agree and Install Now**” link.

### **SOFTWARE UPDATES:**

Keep your EScan Pro up to date!

Go to **<http://www.atsnm.com/downloads.htm>** for the latest updates.

I would like to personally thank you for choosing ATS. At ATS we stand behind our products and we are proud of the service we give to our customers. If you have any questions concerning the use of your EScan Pro, please call us at 800-572-6112.

Sincerely,

A handwritten signature in blue ink, appearing to read "Bernie Thompson". The signature is fluid and cursive, with a large, sweeping flourish at the end.

Bernie Thompson  
President  
Automotive Test Solutions, Inc.